

SERVING THE MINERAL INDUSTRIES FOR MORE THAN A CENTURY



Bradley

PULVERIZER COMPANY



HERCULES AIRSWEPT MILL

- UP TO 150 TONNES PER HOUR
- SIZES TO 10 MICRON
- FLUID BED DRYING
- FLEXIBLE OPERATION
- INSTANT SIZE CONTROL
- LOW NOISE AND VIBRATION
- GROUND LEVEL ACCESS
- ROBUST AND RELIABLE

SERVING THE MINERAL INDUSTRIES FOR MORE THAN A CENTURY

SERVING THE MINERAL INDUSTRIES FOR MORE THAN A CENTURY

Producers of ores, coal, clays and cement - of fertilisers and agricultural limestone - of slags, pigments and other minerals - have depended on Bradley technology, engineering and equipment for over 100 years. They can rely on Bradley mills and service for uninterrupted heavy tonnage production of materials which meet the most demanding specifications for particle size distribution. And they know from actual experience that Bradley Pulverizers are built to last for decades - even in the most severe service - with minimum maintenance. This is why you will find Bradley equipment specified on five continents.

Bradley mills have been used since 1886 in many industries including:-

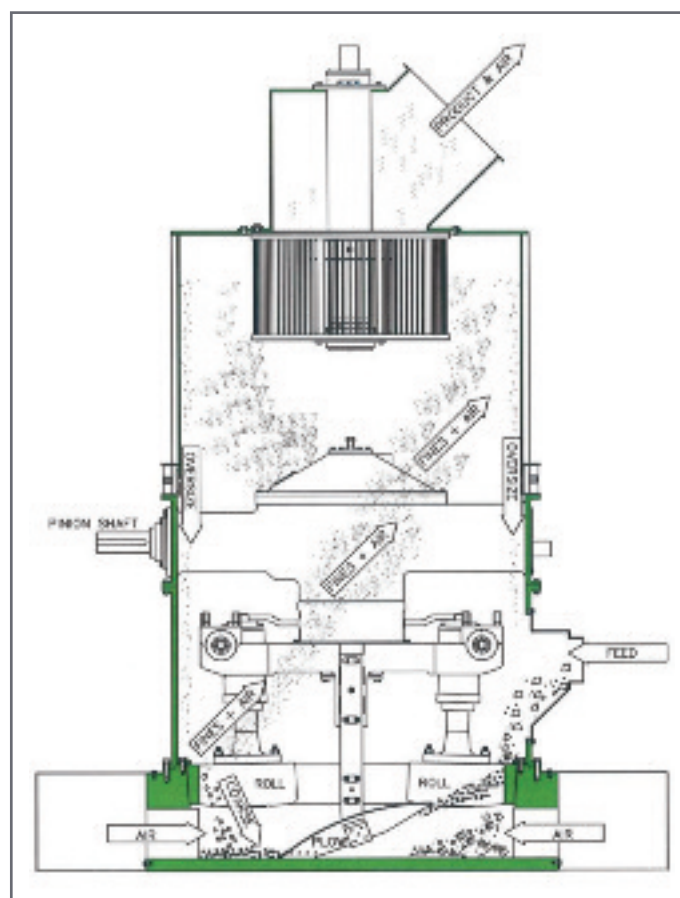
- Fertilizer industry.
- Limestone and Dolomite quarries.
- Mining industries.
- Paint manufacture.
- Cement industry.
- Pellet plants.
- Oil industry.
- Marble processing.
- Coal and coke grinding.
- Glass and ceramics.
- Desulphurization process.
- Miscellaneous.

BRADLEY HERCULES AIRSWEPT MILL

The mill pulverizes material between pendulum roll assemblies and a fixed die ring. Pulverized material from the grinding zone is carried by the air stream to a separator mounted directly above the mill. From there, product size material is carried to a collection system while oversize particles are rejected and recycled for further grinding. Performance of the system is continuously monitored using automatic controls to maintain optimum grinding and drying conditions.

STANDARD MILL SPECIFICATIONS

Mill Size	Mill Motor (kW)	Fan Motor (kW)	Maximum Feed Size (mm)	Relative Output (%)
BM60	500-750	375-600	80	100
BM50	400-500	375-450	60	75
BM30	315-400	250-315	50	50
BM20	200-315	150-200	40	35
BM14	132-150	90-132	30	20
BM10	75-90	55-75	25	10
BM6	55	45-55	20	7
BM3	35	30-35	15	4



"Bradley design and development is focused on pendulum mill type. All mill parts are modelled in 3D software and checked by FEM method. With continuous development, this makes Bradley mill the best in its class".

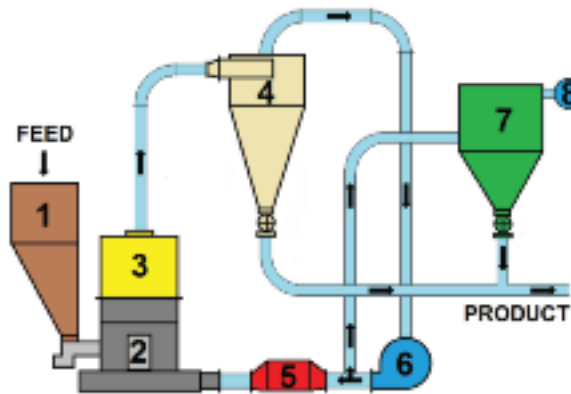


Key Points:

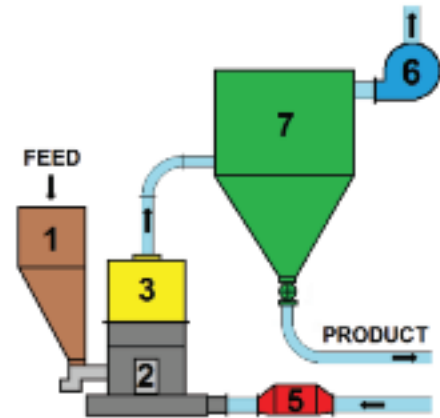
- Grinding, classifying and flash drying in one process.
- Unique over-driven design means low investment.
- Fluid bed drying saves 25% on fuel cost.
- Simple and solid foundation block.
- Less vibration and noise reducing maintenance cost.
- Ground level access and low feed.
- Gearbox oil does not need to be cooled.
- Atex certification possible.
- Robust design.

TYPICAL CIRCUITS

Circuit with cyclone and bag filter



Circuit with bag filter



1. Feed Hopper

3. Classifier

5. Air Heater

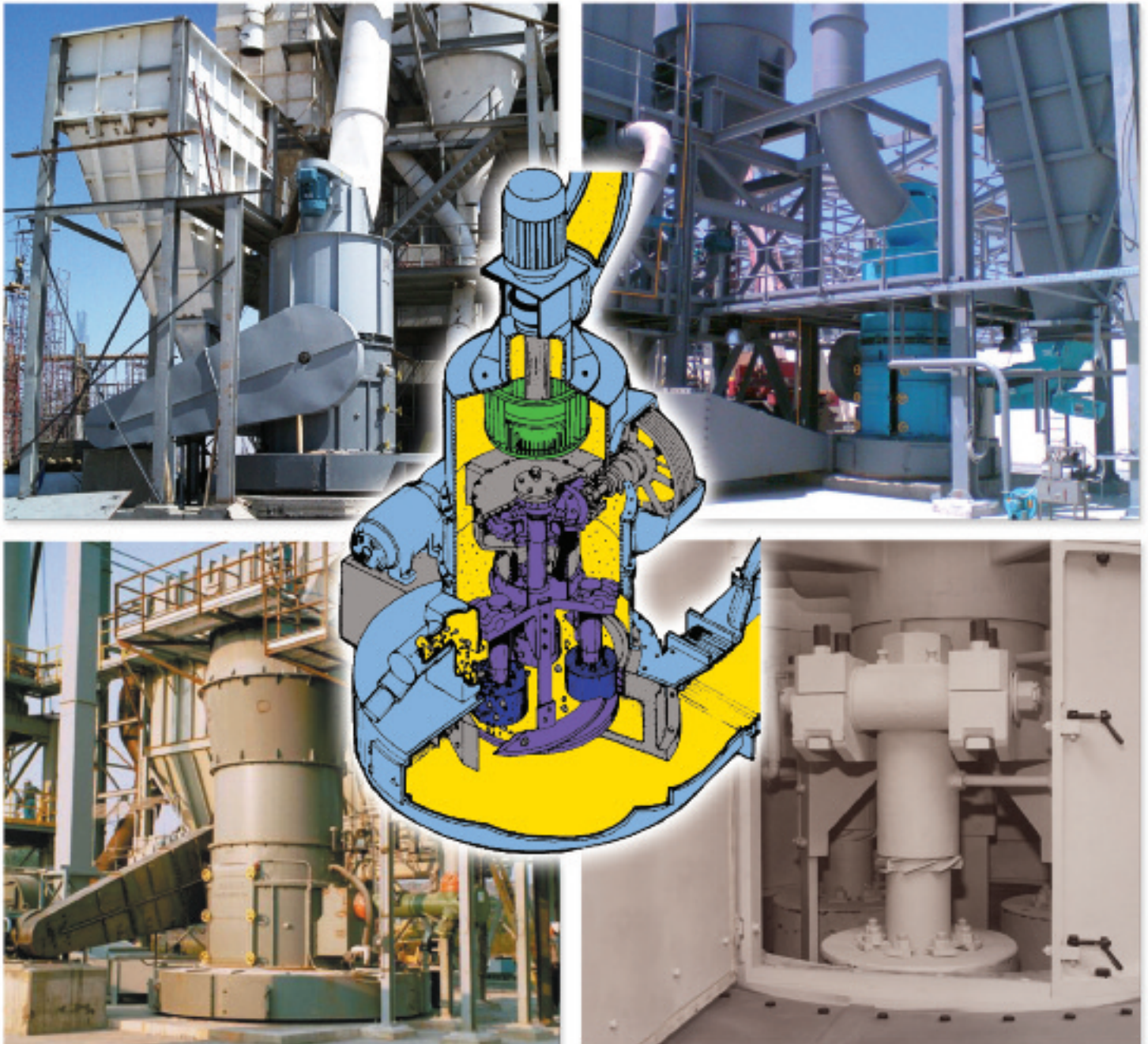
7. Bag Filter

2. Airswept Mill

4. Cyclone

6. Main Fan

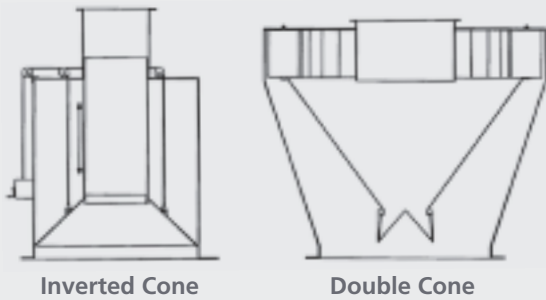
8. Exhaust Fan



CLASSIFIER TYPES

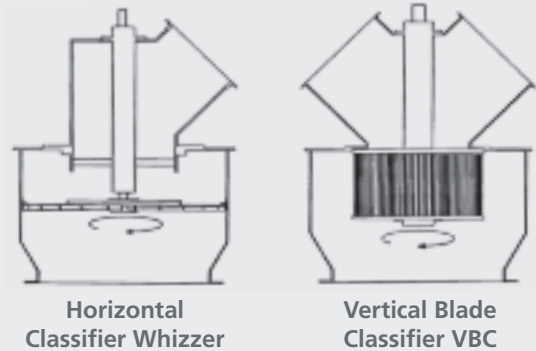
To provide desired particle size distribution, Bradley mills can be equipped with different types of classifier, to meet customers application demands.

Bradley Pulverizer Static Classifiers



Static classifiers design is rugged and simple, without rotating parts and power consumption. The inverted cone type is used for coarse grinding, while the double cone type for fine.

Bradley Pulverizer Dynamic Classifiers



Dynamic classifiers allow instant adjustment to provide wide flexibility of operation. They produce cleaner top size cuts for finer grinding applications. The Bradley VBC classifier can produce extremely fine powders direct from the mill.

BRADLEY PULVERIZER SERVICES

Testing:

- *Laboratory tests and laser size analysis at our United Kingdom site.*
- *Pilot scale grinding tests at our US plant.*

Erection and Start-Up

Bradley engineers can supervise erection, start-up and repairs on site and also provide routine contract inspection for customers. Major overhauls can be undertaken in the Bradley shops on fast-track schedules.

Consulting

If you need to switch raw materials, meet changing product demands, overcome production problems or comply with new pollution control regulations, call upon Bradley's consulting service.

Maintenance and Spares

Customer service is provided throughout the life of Bradley equipment. Large stocks of mill spares held in both UK and USA premises, maintained for immediate shipment.



Test Mill at Our U.S. Plant



Bradley

PULVERIZER COMPANY

For Further Information Please Contact:

Bradley Pulverizer Company - 15 Kennet Road - Crayford - Kent - DA1 4QN - United Kingdom
Tel: +(44) 1322 559106 - Email: mail@bradleypulverizer.co.uk - Web: www.bradleypulverizer.com